

LOOK FRESH, YOUNG AND HEALTHY WITH YOUR MAGIC COLOURS

Colours form a powerful communication tool. They evoke specific emotions and personality traits **and have an impact on how you come across**. You can unlock the power of colours in your dressing through:

1. Colour Harmony
2. Colour Season
3. Colour Matching (choosing the right combination of colours to wear)

1. COLOUR HARMONY



Cool skin tone refers to skin that has pink, red, or bluish undertones, which can make the skin appear to have a slightly rosy or purplish cast.



Warm skin tone refers to skin that has yellow, orange undertones, which can make the skin appear to have a slightly golden or sun-kissed cast.

Wear colours that **complement your skin tone**. Visual impact of colours that:

HARMONISES WITH YOU

Skin glows
 Look healthier
 More energetic
 Younger
 Have more presence

DO NOT HARMONISE WITH YOU

Skin appears sallow
 Look sickly
 Low energy
 Older
 No presence

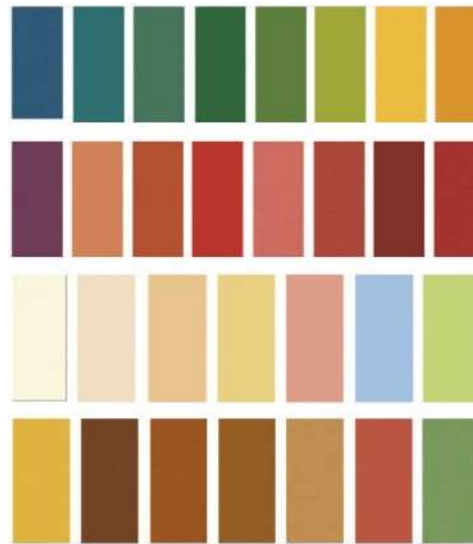
Colours for Cool Skin Tone:

Cool skin tones look best in colours that are generally on the **cool end of the colour spectrum** and have **blue or rose/pink undertones**.



Colours for Warm Skin Tone:

Warm skin tones look best in colours that are generally on the **warm end of the colour spectrum** and have **yellow, gold, or peach undertones**.



2. Colour Season

My Colour Season is:

Spring

Summer

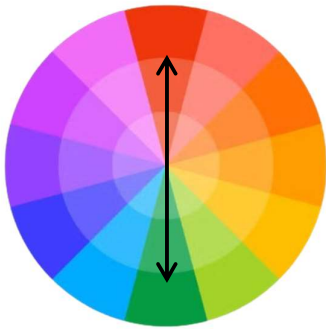
Autumn

Winter

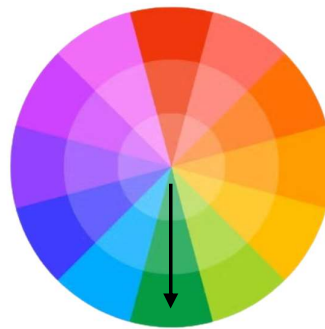


Let's stay connected! Scan here to find me on LinkedIn — I'd love to continue the conversation.

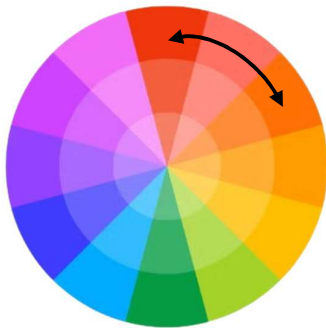
3. MATCHING OF COLOURS



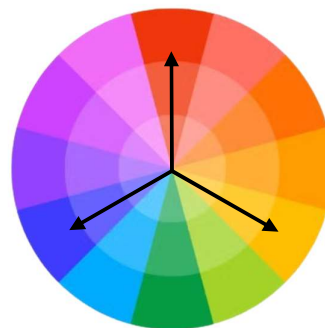
Opposite sides of the wheel



Different shades of the same colour



Neighbourly colours



3 colours that are equal distance apart